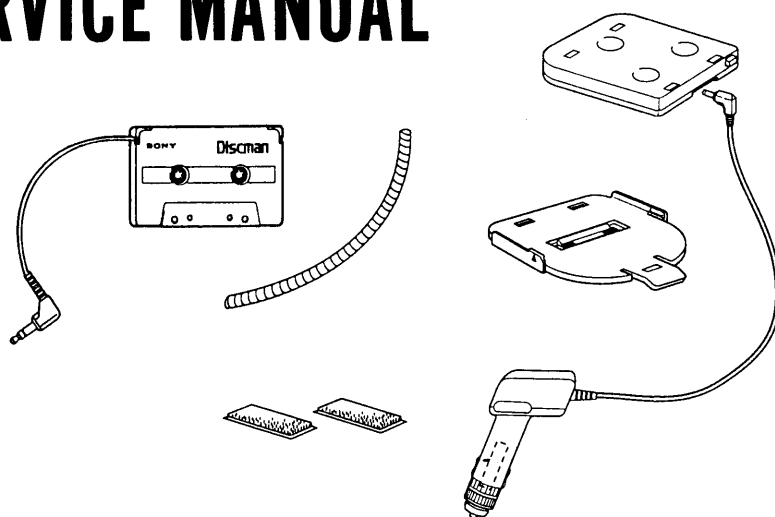


D-132CK

SERVICE MANUAL



*US Model
Canadian Model
AEP Model
UK Model
E Model
Australian Model*

D-132CK is made up of Compact Disc Compact Player D-131, and the car mount kit.

For Compact Disc Compact Player, please refer to D-130/131 service manuals (9-959-403-□□) previously issued.

There is only the information of the car mount kit in this service manual.

SPECIFICATIONS

Mount plate

Dimensions Approx. 126 × 25 × 116 mm (5 × 1 × 4⁵/₈ in.) (l/h/d) not including projecting parts

Mass Approx. 120 g (4.3 oz.)

Car connecting pack

Frequency response 50 – 20,000 Hz*

* Differs depending on your cassette car stereo.

Dimensions Approx. 102.4 × 12.1 × 63.8 mm (4¹/₈ × 1/2 × 2⁵/₈ in.) (w/h/d) including projecting parts

Mass Approx. 45 g (1.5 oz.)

Cord length 1.5 m

Design and specifications subject to change without notice.

**COMPACT DISC COMPACT PLAYER
WITH MOUNT PLATE
SONY®**

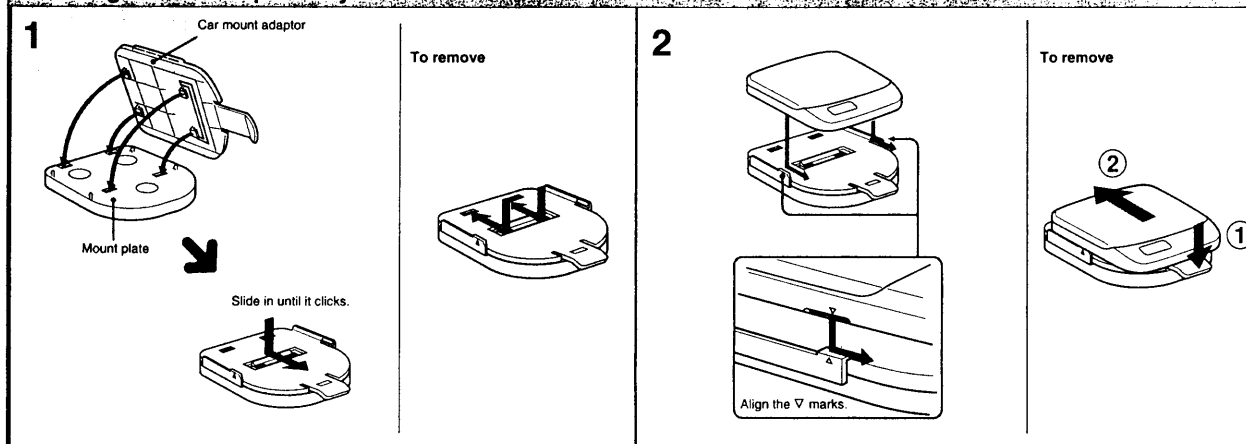


SECTION 1 GENERAL

This section is extracted from instruction manual.

Installation

Attaching the CD Compact Player

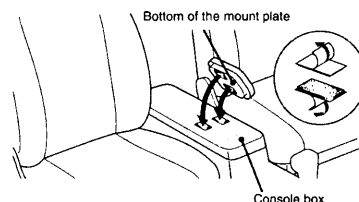


Installing with Velcro Tapes

The mount plate can be installed directly on a console box with the supplied Velcro tapes.

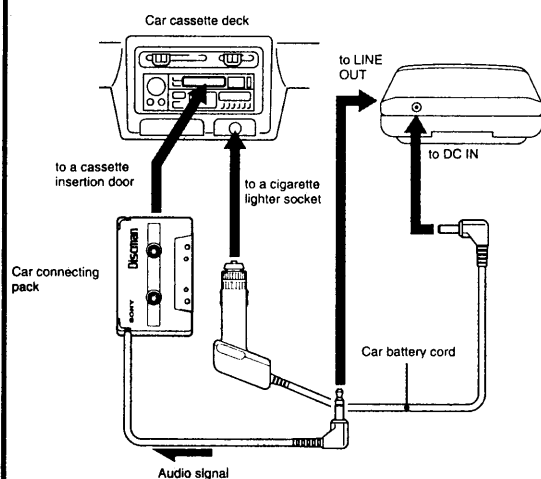
Notes

- When you will park your car for a long period, remove the mount plate from the Velcro tapes so the CD compact player will not be exposed to direct sunlight.
- Do not install the mount plate in an unstable place or where any objects around it may interfere.
- Do not install the mount plate on a dashboard.
- Install the unit so that it will not interfere with your driving.



Connection

To listen to the CD compact player through the car cassette deck, make connections as shown.



Note

Route the cords so that they do not interfere with your driving.

- 1 Insert the car connecting pack into the car cassette deck.
- 2 Set a tape selector to the normal (TYPE I) position and DOLBY NR, REPEAT, and BLANK SKIP switches to OFF if they are equipped.
- 3 Start playback.
If your car cassette deck has a reversible playback head, make sure that it is set in the normal (forward) direction.
- 4 Start play on the CD compact player.
- 5 Adjust the volume.

If no sound is heard or the car connecting pack is ejected, change the direction of the playback on the car cassette deck.

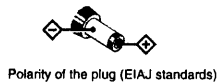
To remove the car connecting pack, press the (eject) button of the car cassette deck.

Notes

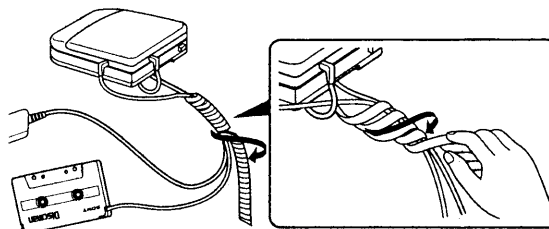
- Never insert the cord end of the car connecting pack into the cassette insertion door. Otherwise, the cord may break or the car cassette deck may be damaged.
- You cannot use the car connecting pack with some car cassette deck.
- When you replace the cord cover removed, be sure to fit it firmly.
- The cord should be placed so that it does not hinder driving.
- To disconnect the cord from the CD compact player, pull it out by grasping the plug. Never pull the plug out by the cord.
- With some car cassette decks, you may hear some rattling noise from the car connecting pack. However, this is not a sign of malfunction.

Note on DC Plug

The 4.5 V DC plug supplied with car battery cord conforms to the proposed standards of the Electronic Industries Association of Japan (EIAJ). Do not connect it to other CD compact player.



To route the cords, use the supplied spiral tube.

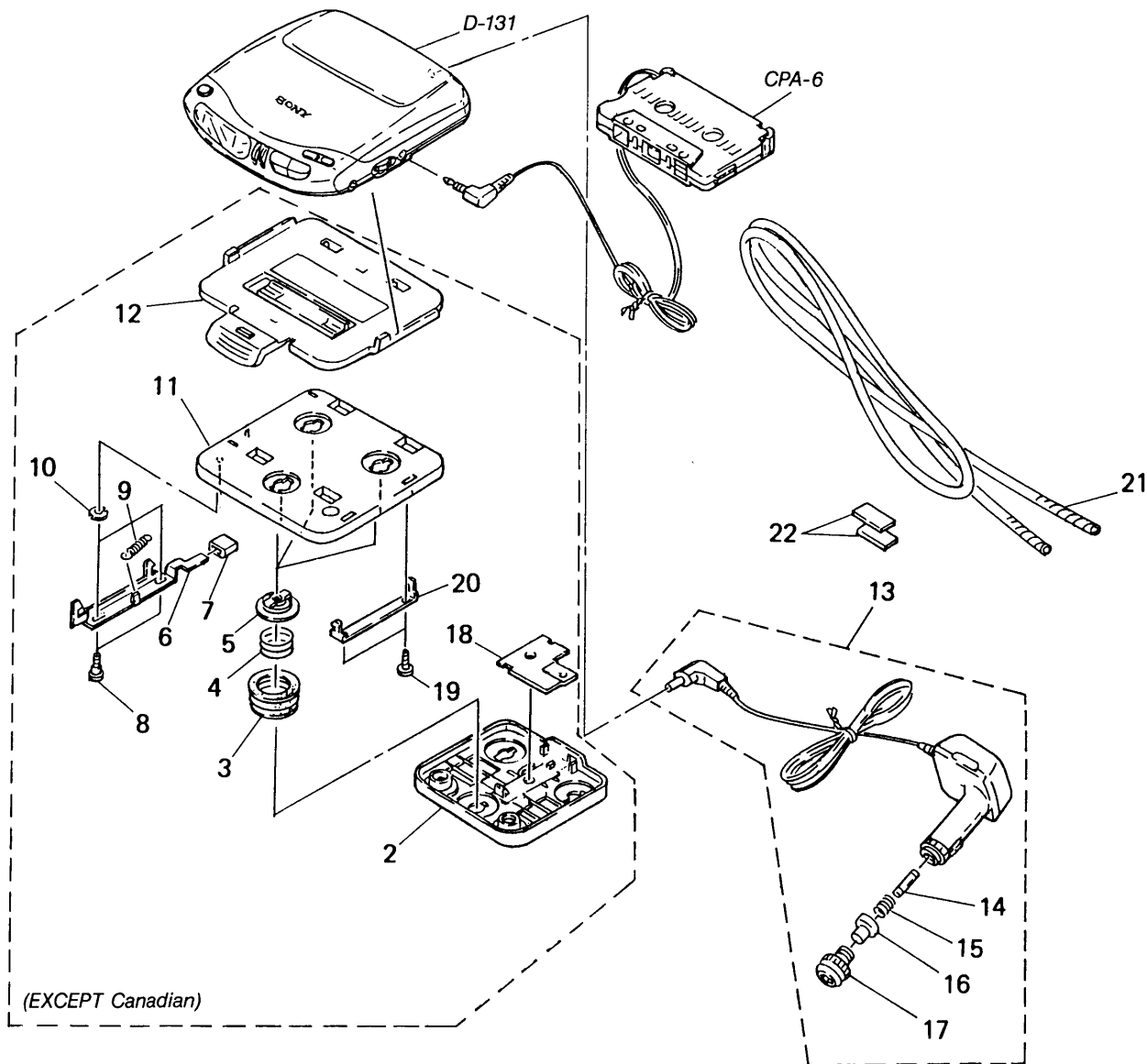


SECTION 2

EXPLODED VIEW

NOTE:

- -XX and -X mean standardized parts, so they may have some difference from the original one.
- Items marked "*" are not stocked since they are seldom required for routine service. Some delay should be anticipated when ordering these items.
- The mechanical parts with no reference number in the exploded views are not supplied.



Ref. No.	Part No.	Description	Remark	Ref. No.	Part No.	Description	Remark
2	4-958-719-11	PLATE BOTTOM		13	1-751-087-11	CORD, CAR BATTERY (DCC-E455)	
3	3-331-932-01	DAMPER, CORNICE		14	1-532-360-XX	FUSE, GLASS TUBE	
* 4	2-120-501-01	SPRING, COMPRESSION		15	4-950-263-01	SPRING	
* 5	3-331-929-11	ORIFICE, CONRNICE		16	4-950-277-01	CHIP	
6	4-958-718-01	SLIDER, LOCK		17	4-950-259-01	CAP	
7	2-120-535-01	BUTTON		18	4-958-716-01	HEAT SINK	
8	2-120-537-01	SCREW, STEP		19	4-908-792-51	SCREW, TAPPING B 2X5	
9	3-548-757-00	SPRING, TENSION		20	2-120-536-01	PLATE, HOOKING	
10	2-120-556-01	WASHER		21	2-120-526-01	TUBE, SPIRAL	
11	4-958-717-11	CABINET		22	2-201-810-00	MAGIC TAPE	
12	X-4943-793-1	ADAPTOR ASSY		CPA-6	A-3263-915-A	CAP-6 (SET) CAR CONNECTING PACK	

SEE ADDITIONAL INFORMATION

NOTE:

- -XX and -X mean Standardized parts, so they may have some difference from the original one

- Items marked "*" are not stocked since they are seldom required for routine service. Some delay should be anticipated when ordering these items.

The components identified by mark \triangle or dotted line with mark \triangle are critical for safety. Replace only with part number specified.

Les composants identifiés par une marque \triangle sont critiques pour la sécurité. Ne les remplacer que par une pièce portant le numéro spécifié.

Ref.No.	Part No.	Description	Remark
		ACCESSORIES & PACKING MATERIALS *****	
\triangle	1-467-007-21	ADAPTOR, AC (AC-E455) (Australian)	
\triangle	1-467-008-11	ADAPTOR, AC (AC-E455) (AEP)	
\triangle	1-467-013-11	ADAPTOR, AC (AC-E455) (UK)	
\triangle	1-467-195-11	ADAPTOR, AC (AC-E455A) (US, Canadian)	
\triangle	1-467-550-11	ADAPTOR, AC (AC-E455A) (E)	
	1-558-145-32	CORD, CONNECTION	
\triangle	1-569-007-11	ADAPTER, CONVERSION 2P (E)	
	3-758-417-11	MANUAL, INSTRUCTION (FOR D-131) (SPANISH) (AEP, E)	
	3-758-417-21	MANUAL, INSTRUCTION (FOR D-131) (ENGLISH)	
	3-758-417-31	MANUAL, INSTRUCTION (FOR D-131) (FRENCH) (AEP)	
	3-758-417-41	MANUAL, INSTRUCTION (FOR D-131) (DUTCH) (AEP)	
	3-758-417-51	MANUAL, INSTRUCTION (FOR D-131) (SWEDISH) (AEP)	
	3-758-417-61	MANUAL, INSTRUCTION (FOR D-131) (PORTUGUESE) (AEP)	
	3-758-417-71	MANUAL, INSTRUCTION (FOR D-131) (GERMAN) (AEP)	
	3-758-417-81	MANUAL, INSTRUCTION (FOR D-131) (ITALIAN) (AEP)	
	3-759-067-31	MANUAL, INSTRUCTION (FOR D-132CK) (FRENCH) (Canadian)	
	3-759-067-41	MANUAL, INSTRUCTION (FOR D-132CK) (ENGLISH) (Canadian)	
	3-759-075-51	MANUAL, INSTRUCTION (FOR D-132CK) (ENGLISH) (Canadian)	
	3-759-075-61	MANUAL, INSTRUCTION (FOR D-132CK) (FRENCH) (Canadian)	
	3-759-148-11	MANUAL, INSTRUCTION (FOR D-132CK) (Spanish) (AEP, E)	
	3-759-148-21	MANUAL, INSTRUCTION (FOR D-132CK) (ENGLISH) (EXCEPT Canadian)	
	3-759-148-31	MANUAL, INSTRUCTION (FOR D-132CK) (FRENCH) (AEP)	
	3-759-148-41	MANUAL, INSTRUCTION (FOR D-132CK) (DUTCH) (AEP)	

Ref.No.	Part No.	Description	Remark
	3-759-148-51	MANUAL, INSTRUCTION (FOR D-132CK) (SWEDISH) (AEP)	
	3-759-148-61	MANUAL, INSTRUCTION (FOR D-132CK) (PORTUGUESE) (AEP)	
	3-759-148-71	MANUAL, INSTRUCTION (FOR D-132CK) (GERMAN) (AEP)	
	3-759-148-81	MANUAL, INSTRUCTION (FOR D-132CK) (ITALIAN) (AEP)	
*	4-965-705-01	CUSHION (US, Canadian)	
*	4-966-540-01	INDIVIDUAL CARTON (US)	
*	4-966-545-01	INDIVIDUAL CARTON (Canadian)	
*	4-966-550-01	INDIVIDUAL CARTON (AEP, UK)	
*	4-966-551-01	INDIVIDUAL CARTON (E)	
*	4-966-555-01	INDIVIDUAL CARTON (Australian)	

Sony Corporation
Consumer A&V Products Company
Personal A&V Products Div.

English
94D05110-1
Printed in Japan
© 1994. 4

Published by Home A&V Products Div.
Quality Engineering Dept.

D-132CK

SONY SERVICE MANUAL

*US Model
Canadian Model
AEP Model
UK Model
E Model
Australian Model*

SUPPLEMENT-1

File this supplement with the service manual.

Subject: Addition of Saudi Arabia.

Saudi Arabia model have been added.
There are the same as E model which is not described in this supplement-1. Refer to D-132CK original service manual (9-959-541-11) for the other informations.

• ACCESSORIES & PACKING MATERIALS

Page	E model		Saudi Arabia Model	
	Part No.	Description	Part No.	Description
4	△1-467-550-11	ADAPTOR, AC (AC-E455A)	△1-467-012-11	ADAPTOR, AC (AC-E455)
	△1-569-007-11	ADAPTOR, CONVERSION 2P	△1-569-008-11	ADAPTOR, CONVERSION 2P

The components identified by mark △ or dotted line with mark △ are critical for safety.
Replace only with part number specified.

D-132CK

SONY[®] SERVICE MANUAL

US Model
Canadian Model
AEP Model
UK Model
E Model
Australian Model

CORRECTION-1

Correct your service manual as shown below.

CABINET (REAR) and UPPER LID for the Compact Disc Compact Player
D-132CK are different from them for the model D-131.
Please refer to the following different parts list.

• DIFFERENT PARTS

Page 25 on D-130/131 SERVICE MANUAL.

Ref. No.	D-131		D-132CK	
	Part No.	Description	Part No.	Description
3	4-966-034-01	CABINET (REAR) (BLACK)... (BLACK, GREEN, BLUE) (D-131: CA, AEP, E13, E33, PA, E92, G, EA, AU, FR, MX, UK)	4-966-069-11	CABINET (REAR) (BLACK)
	4-966-034-11	CABINET (REAR) (GREY)... (RED) (D-131: CA, AEP, E13, E33, PA, E92, G, EA, AU, FR, MX, UK)		
	4-966-637-01	CABINET (REAR) (BLACK) (D-131: US)		
14	4-965-556-01	LID, UPPER (BLACK) (D-131: CA, AEP, E33, E92, G, EA, AU, FR, MX, UK)	4-965-964-01	LID, UPPER (BLACK)
	4-965-556-11	LID, UPPER (RED) (D-131: CA, AEP, E33, E92, G, EA, AU, FR, MX, UK)		
	4-965-556-21	LID, UPPER (GREEN) (D-131: CA, AEP, E33, E92, G, EA, AU, FR, MX, UK)		
	4-965-556-31	LID, UPPER (BLUE) (D-131: CA, AEP, E33, E92, G, EA, AU, FR, MX, UK)		
	4-965-556-41	LID, UPPER (BLACK) (D-131: PA)		
	4-965-556-91	LID, UPPER (BLACK) (D-131: E13)		
	4-965-639-01	LID, UPPER (BLACK) (D-131: US)		

(SPM-94025)

- Color Indication of Appearance Parts
Example:

KNOB, BALANCE (WHITE) ... (RED)

↑ ↑
Parts Color Cabinet's Color

- DESTINATION

CA: Canadian EA: Saudi Arabia
AU: Australian FR: French
E33: AC100-240V area model

G: German PA: Panama
MX: Mexican E13: AC220-230V area model
E92: AC120V area model